

# System Box art. 98712

## PROFONDITÀ INCASSO

DEPTH BUILT-IN SHOWER MIXER

78 mm

## TOLLERANZA INSTALLAZIONE PIASTRA IN OTTONE

BRASS PLATE INSTALLATION TOLERANCE

37 mm

## PROLUNGA AGGIUNTIVA

ADDITIONAL EXTENSION

+ 30 mm

codice finitura  
finishing code

COD. R23056 00

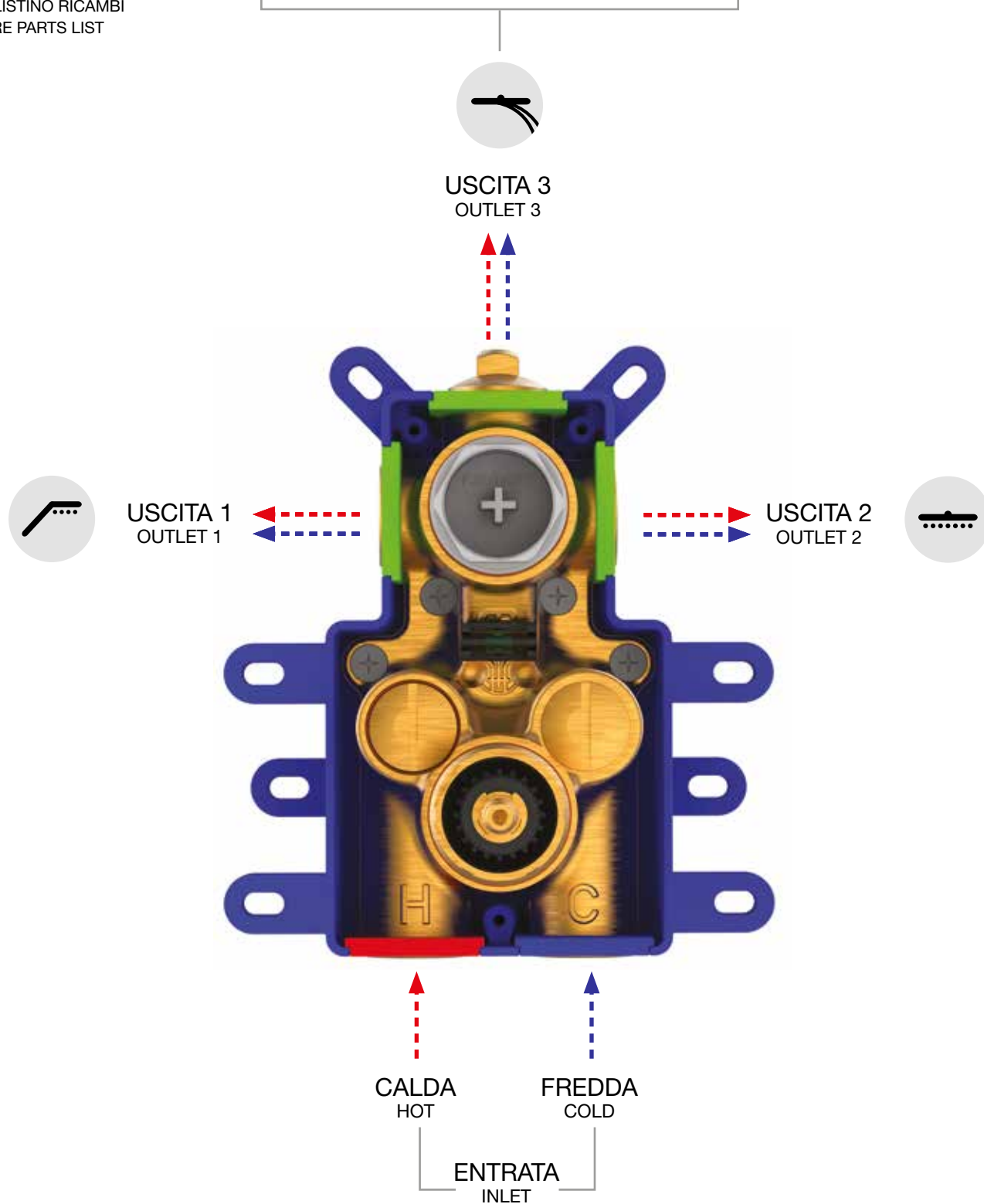
VEDERE LISTINO RICAMBI  
SEE SPARE PARTS LIST

## TOLLERANZA INSTALLAZIONE PIASTRA IN ABS

ABS PLATE INSTALLATION TOLERANCE

31 mm

DA UTILIZZARE SOLO SE NECESSARIA LA TERZA USCITA  
THIRD WAY TO BE USED ONLY IF NECESSARY





TEMOSTATICO  
THERMOSTATIC BOX

# art. 98712

Corpo per termostatico incasso doccia universale, **2/3 vie**, con deviazione a dischi ceramici

Universal thermostatic built-in shower mixer, **2/3 way** ceramic discs diverter

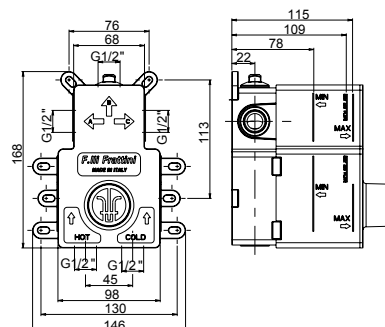
Corps à encastrer universel mitigeur de douche thermostatique **2-3 voies**

Cuerpo empotrado universal para mezclador termostático ducha, inversor discos ceramicos **2-3 vías**

UP-Universal Körper **2/3 Wege** Thermostat-Brausenmischer

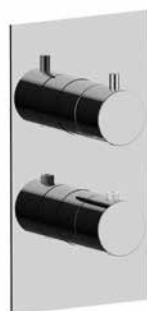


Livella inclusa  
Bubble level included



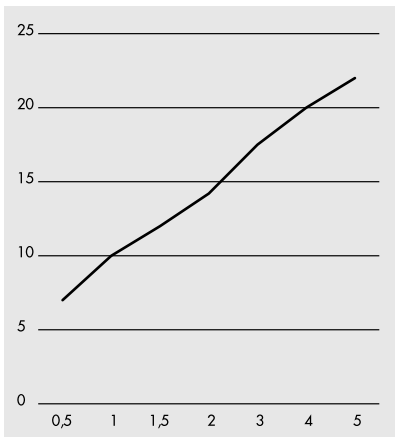
ESEMPIO DI ESTETICA  
EXAMPLE OF EXTERNAL  
VISIBLE COMPONENTS

art. 55712V2 - 55712V3



## PORTATA 1/2/3 VIE / 1/2/3-WAY FLOW

PROVE DI PORTATA - FLOW RATE (L/MIN)



PRESSIONE PRESSURE P (BAR)	VALORI RESULTS ACQUA MISCELATA MIXED WATER V1 / V2 / V3
0,5	7
1	10
1,5	12
2	14,2
2,5	15,3
3	17,5
4	20
5	22

## DATI TECNICI / TECHNICAL SPECIFICATIONS



2 VIE  
2-WAY



FACILE INSTALLAZIONE  
EASY INSTALLATION



OTTONE DZR  
DZR BRASS



3 VIE  
3-WAY



UNIVERSALE PER TUTTE LE SERIE F.LLI FRATTINI  
UNIVERSAL FOR ALL THE F.LLI FRATTINI SERIES



IMPERMEABILE  
WATERPROOF